

A brief introduction to the Norwegian greenhouse gas emission inventory

This text is an abstract of the first chapters of the Norwegian Inventory Report, submitted to the UNFCCC in April 2019. It summarizes the main trends in greenhouse gas emissions in Norway, taken from the report to the UNFCCC in 2019. It also gives a brief description of the national system for calculating and reporting greenhouse gas emissions, and an overview of the different source categories in national and international reporting.

Norwegian Environment Agency (Miljødirektoratet), April 2019

Content

Preparing the inventory	2
Institutional, legal and procedural arrangements	2
Brief description of methodologies and data sources used	3
The main emission model	3
Data sources	4
The LULUCF model	4
Quality control and verification	5
Results from the National Inventory Report 2019	6
Overall emission trends	7
Emission inventory of the different greenhouse gases	9
Emission trends by sector	10
Energy	12
Industrial processes and product use	15
Agriculture	17
Land Use, Land-Use Change and Forestry (LULUCF) and KP-LULUCF	18
Waste	20
Source categories in national and international reporting	22
References	26

Preparing the inventory

Institutional, legal and procedural arrangements

The Norwegian greenhouse gas emission inventory has been produced for more than three decades. It started with CO₂ and has gradually been expanded with other emission components. The Norwegian Environment Agency, Statistics Norway and the Norwegian Institute of Bioeconomy Research (NIBIO) are the responsible institutions.

The Norwegian Environment Agency, Statistics Norway, and the Norwegian Institute of Bioeconomy Research work together to fulfill the requirements for the national system. An overview of institutional responsibilities and cooperation is shown in Figure 1.

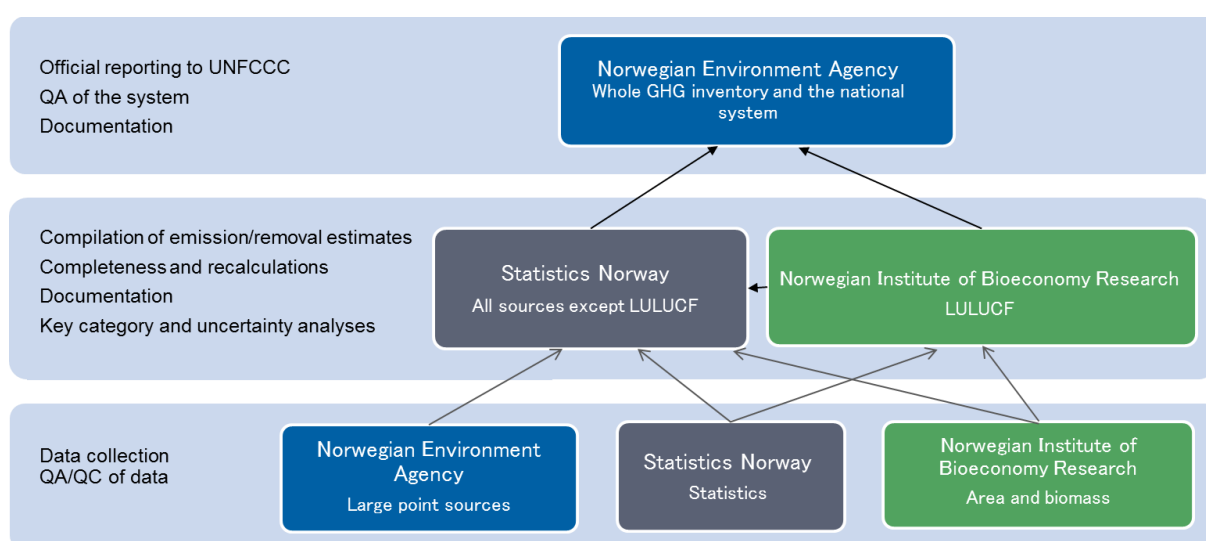


Figure 1 Overview of institutional responsibilities and cooperation

Statistics Norway is responsible for the collection and development of activity data, and compiling of the data used in the models that produce emission estimates for the source categories Energy, Industrial Processes and Product Use (IPPU), Agriculture and Waste. Statistics Norway also operates these models. The Norwegian Environment Agency is responsible for the emission factors, for providing data from specific industries and emission sources and for considering the quality, and assuring necessary updating, of emissions models like e.g. the road traffic model and calculation of methane emissions from landfills. The Norwegian Institute of Bioeconomy Research is responsible for estimating emissions from the LULUCF sectors, collects almost all data and calculates the emissions.

Norway has an integrated inventory system for producing inventories of the greenhouse gases included in the Kyoto Protocol and the air pollutants SO₂, NO_x, non-methane volatile organic compounds (NMVOC), ammonia, CO, particulate matter, heavy metals and persistent organic pollutants reported under the LRTAP Convention. The data flow and QA/QC procedures are to a large extent common to all pollutants.

Brief description of methodologies and data sources used

Details of the methods and framework for the production of the emission inventory are given in the Norwegian Emission Inventory 2019.

The emission estimation methodologies are being improved on an annual basis, to improve both activity data and emission factors. As far as possible, data collection relevant to the emission inventories is integrated into other surveys and statistics.

The main emission model

The model was developed by Statistics Norway (Daasvatn et al. 1992; 1994). It was redesigned in 2003 in order to improve reporting to the UNFCCC and LRTAP, and to improve QA/QC procedures.

Several emission sources – e.g. road traffic, agriculture, air traffic and solvents – are covered by more detailed side models. Aggregated results from these side models are used as input to the general model.

The general emission model is based on equation (1.1).

$$(1.1) \quad \text{Emissions (E)} = \text{Activity level (A)} \cdot \text{Emission Factor (EF)}$$

For emissions from *combustion*, the activity data is use of energy products. In the Norwegian energy accounts, the use of energy products is allocated to industries (economic sectors). In order to calculate emissions to air, energy use must also be allocated to technical sources (e.g. equipment). This makes it possible to match activity data with relevant emission factors.

The energy use data are combined with a corresponding matrix of emission factors. In principle, there should be one emission factor for each combination of fuel, industry, source, and pollutant. However, in a matrix with a cell for each combination, most of the cells would be empty (no consumption), while on the other hand, the same emission factor would apply to many cells.

Emissions of some pollutants from major manufacturing plants (point sources) are available from measurements or other plant-specific calculations (collected by the Norwegian Environment Agency). When such measured data are available, they are usually considered to give better representation of the actual emission, and the estimated values are replaced by the measured ones:

$$(1.2) \quad \text{Emissions (E)} = [(A - A_{PS}) \cdot EF] + E_{PS}$$

where A_{PS} and E_{PS} are the activity and the measured emissions at the point sources, respectively. Emissions from activities for which no point source estimate is available ($A - A_{PS}$) are still estimated with the regular emission factor.

Non-combustion emissions are generally calculated in the same way, by combining appropriate activity data with emission factors. Some emissions are measured directly and reported to the Norwegian Environment Agency from the plants, and some may be obtained from current reports and investigations. The emissions are fitted into the general model using the parameters industry, technical source, and pollutant. The fuel parameter is not relevant here. The source sector categories

are based on EMEP/NFR and UNFCCC/CRF categories, with further subdivisions where more detailed methods are available.

The model uses approximately 220 *industries* (economic sectors). The classification is common with the basis data in the energy balance/accounts, and is almost identical to that used in the national accounts, which is aggregated from the European NACE classification (Statistics Norway 2008). The large number of sectors is an advantage in dealing with important emissions from manufacturing industries. A possible disadvantage is an unnecessary disaggregation of sectors with very small emissions. To make the standard sectors more appropriate for calculation of emissions, a few changes have been made compared to the NACE classification, e.g. "Private households" is defined as a sector.

Data sources

The data sources used in the Norwegian inventory are outlined in the following:

Activity levels: These normally originate from official statistical sources available at Statistics Norway or data is available from external sources. When such information is not available, research reports are used or extrapolations are made from expert judgments.

Emission factors: These originate from reports on Norwegian conditions and are either estimated from measurements or elaborated in special investigations. However, international default data are used in cases where national emission factors are highly uncertain or lacking (e.g. N₂O from agriculture, CH₄ and N₂O from stationary combustion) or when the source is insignificant compared to other sources.

Aggregated results from the side models: The operation of the side models in the inventory requires various sets of additional parameters pertinent to the emission source at hand. These data sets are as far as possible defined in official registers, public statistics and surveys, but some are based on assumptions.

Emission figures for point sources: For large industrial plants these are figures reported to the Norwegian Environment Agency by the plants responsible (based on measurements or calculations at the plants).

The LULUCF model

The Norwegian Institute of Bioeconomy Research is in charge of estimating emissions and removals from Land use, Land-Use Change and Forestry (LULUCF) where most of the categories have area statistics as activity data. A software based calculation system that primarily uses the data analysis software R, was developed for the implementation of the IPCC good practice guidance for the LULUCF sector. The system uses input data from different sources and creates final output datasets. These final datasets include all the data needed for the tables in the common reporting format (CRF) for both the Climate Convention and the Kyoto Protocol.

The National Forest Inventory (NFI) database contains data on areas for all land uses and land-use conversions as well as carbon stocks in living biomass. The NFI is used to estimate total areas of forest land, cropland, grassland, wetlands, settlements, other land, and land-use transitions between these categories. The data from the NFI are complemented with other data (e.g. timber harvest, horticulture, crop types, fertilizer use, drainage of forest soil, and forest fires) collected by Statistics

Norway, Norwegian Agricultural Authority, Food Safety Authority, The Norwegian Directorate for Nature Management, and The Directorate for Civil Protection and Emergency Planning.

The sampling design of the NFI is based on a systematic grid of geo-referenced sample plots covering the entire country. The NFI utilizes a 5-year cycle based on a re-sampling method of the permanent plots (interpenetrating panel design). Up until 2010 the estimates were based on detailed information from sample plots in lowlands outside Finnmark county. Since 2010 the NFI has been expanded to include mountainous areas and Finnmark county in order to monitor the land use, land-use changes, and forestry activities in the whole country. All areas were included for the first time in the estimates for the LULUCF sector in the 2012 submission. Area estimates have been bridged in a consistent manner.

The estimates of carbon stocks and their changes in living biomass are based on single tree measurements of trees larger than 50 mm at 1.3 m height (DBH) on sample plots within forest and other wooded land. Biomass is calculated using single tree allometric biomass models developed in Sweden for Norway spruce and Scots pine (Marklund 1988; Petersson & Ståhl 2006) and Norwegian models for birch (Smith 2016; Smith 2014). These models provide biomass estimates for various tree biomass components: stem, bark, living branches, dead branches, foliage, stumps, and roots. These components are used to calculate above- and belowground biomass.

The dynamic soil model Yasso07 is used to calculate changes in carbon stock in dead organic matter and in soil for forest land remaining forest land (Tuomi et al. 2009; 2011b). Estimates are made for individual NFI plots for the entire time-series. The Yasso07 model provides an aggregated estimate of carbon stock change for the total of litter, dead wood, and soil organic matter. All data used as input to the models is provided by the NFI. Auxiliary data used for estimation of C emissions from cropland, grassland, wetlands, and settlements were provided by Statistics Norway, Norwegian Meteorological Institute, as well as other data sources at the Norwegian Institute of Bioeconomy Research.

Quality control and verification

The reporting obligations has extensive guidance on quality control to ensure that the emission estimates are of high quality. The Norwegian emission inventory preparation includes established routines including the following:

- The Norwegian Environment Agency is the national entity designated to be responsible for the reporting of the national inventory of greenhouse gases to the UNFCCC. This includes coordination of the QA/QC procedures
- Statistics Norway and the Norwegian Institute of Bioeconomy Research are responsible for the quality control system with regard to technical activities of the emission inventory preparation in their respective institutions
- General inventory level quality control procedures are performed every year;
- Source category-specific quality control procedures are performed for important emission sources with regard to emission factors, activity data and uncertainty estimates.

Results from the National Inventory Report 2019

In compliance with its reporting requirements, Norway has submitted to the UNFCCC national emission inventory reports on an annual basis since 1993. The national inventory report (NIR) is prepared in accordance with the revised UNFCCC Reporting Guidelines on Annual Inventories. The methodologies used in the calculation of emissions and removals are consistent with the *2006 IPCC Guidelines for National Greenhouse Gas Inventories*¹.

The greenhouse gases or groups of gases included in the Norwegian national inventory are the following:

- Carbon dioxide (CO₂);
- Methane (CH₄);
- Nitrous oxide (N₂O);
- Hydrofluorocarbons (HFCs);
- Perfluorocarbons (PFCs);
- Sulphur hexafluoride (SF₆)

Aggregated emissions and removals of greenhouse gases expressed in CO₂ equivalents are reported. We have used Global Warming Potentials (GWP) calculated on a 100-year time horizon, as provided by the IPCC in the Fourth Assessment Report. The emission sectors or source categories used for reporting is also stated in the UNFCCC Reporting Guidelines on Annual Inventories. Emissions are reported in a Common Reporting Format (CRF). In Annex 1 there is a table explaining the differences between the source categories in the CRF-reporting format given in this report and the national reporting format from Statistics Norway.

The CRF divides emissions into five main source categories:

- Energy
- Industrial processes and product use (IPPU)
- Agriculture
- Land use and land use change (LULUCF)
- Waste

The energy source category includes all emissions from energy use, both combustion emissions and fugitive emissions. This includes emissions from stationary energy use and transport. The IPPU sector includes non-combustion emissions from the energy sector and emissions from use of products such as solvents and HFCs. The agricultural sector includes emissions from animal husbandry and from agricultural soils, while emissions and removals from e.g. managed forests and land use change is included in the LULUCF sector. The waste sector constitutes emissions from waste management and wastewater handling. This way of organizing emission estimates results in a different split of emissions than a purely economic approach. Emissions from manufacturing industries will for instance be split between the energy and IPPU sectors, and emissions from tractors and other machinery used in agriculture will be allocated to the energy sector.

Indirect CO₂ emissions originating from the fossil part of CH₄ and NMVOC are calculated according to the reporting guidelines to the UNFCCC. This includes emissions from fuel combustion and non-

¹ <https://www.ipcc-nggip.iges.or.jp/public/2006gl/>

combustion sources, such as fugitive emissions from loading of crude oil, oil refineries, distribution of oil products, and from solvents and other product use.

As recommended by the IPCC Guidelines, country specific methods have been used where appropriate and where they provide more accurate emission data than using default methods.

Overall emission trends

In 2017, total greenhouse gas (GHG) emissions in Norway were 52.7 million tonnes of carbon dioxide equivalents, which is a decrease of 0.9 million tonnes compared to 2016². Between 1990 and 2017, the total GHG emissions increased by approximately 1.5 million tonnes, equivalent to an increase of 3 per cent. Emissions reached their peak at 57.0 million tonnes in 2007.

The net GHG emissions, including all sources and sinks, were 27.7 million tonnes of CO₂ equivalents in 2017. The total emissions distribution among the main IPCC sectors from 1990 to 2017 is illustrated in Figure 2.

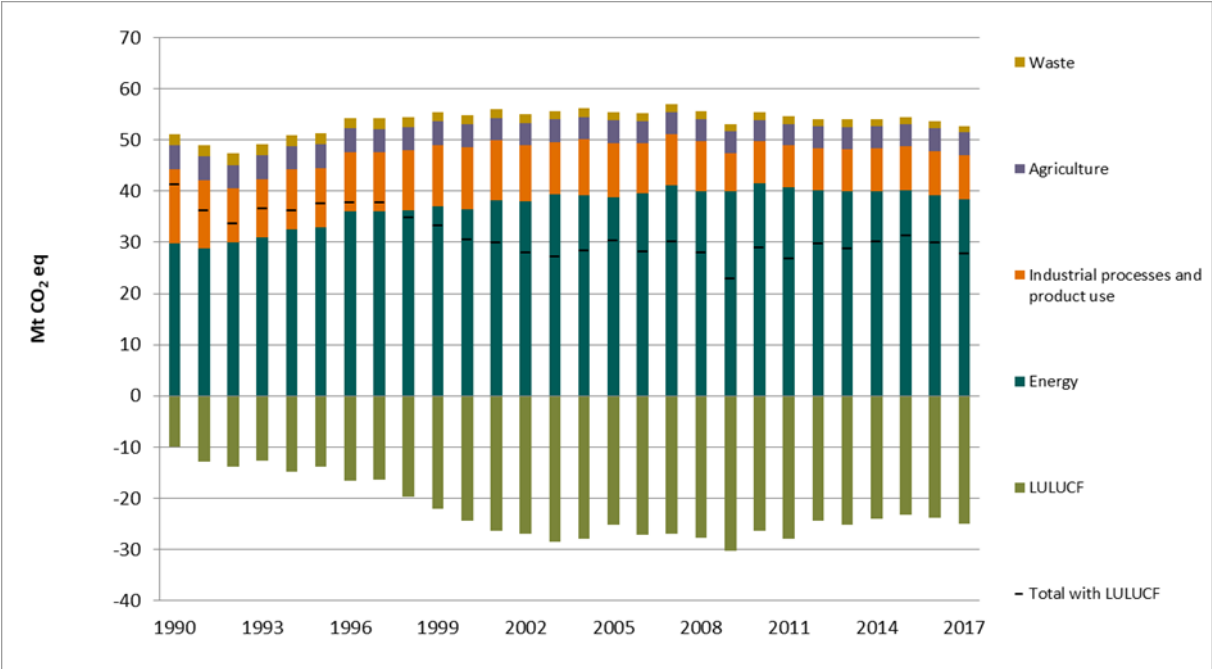


Figure 2. Total emissions of greenhouse gases by sources and removals from LULUCF in Norway, 1990-2017 (Mtonnes CO₂ equivalents). Source: Statistics Norway/Norwegian Environment Agency/Norwegian Institute of Bioeconomy Research

Table 1 presents the total emissions including indirect CO₂ emissions and the distribution among the main CRF sectors from 1990 to 2017. Total indirect CO₂ emissions and net removal from LULUCF are also presented in this table.

² In this NIR, if not specified otherwise, total emission figures include indirect CO₂ emissions but not emissions and removals from land use, land-use change and forestry (LULUCF).

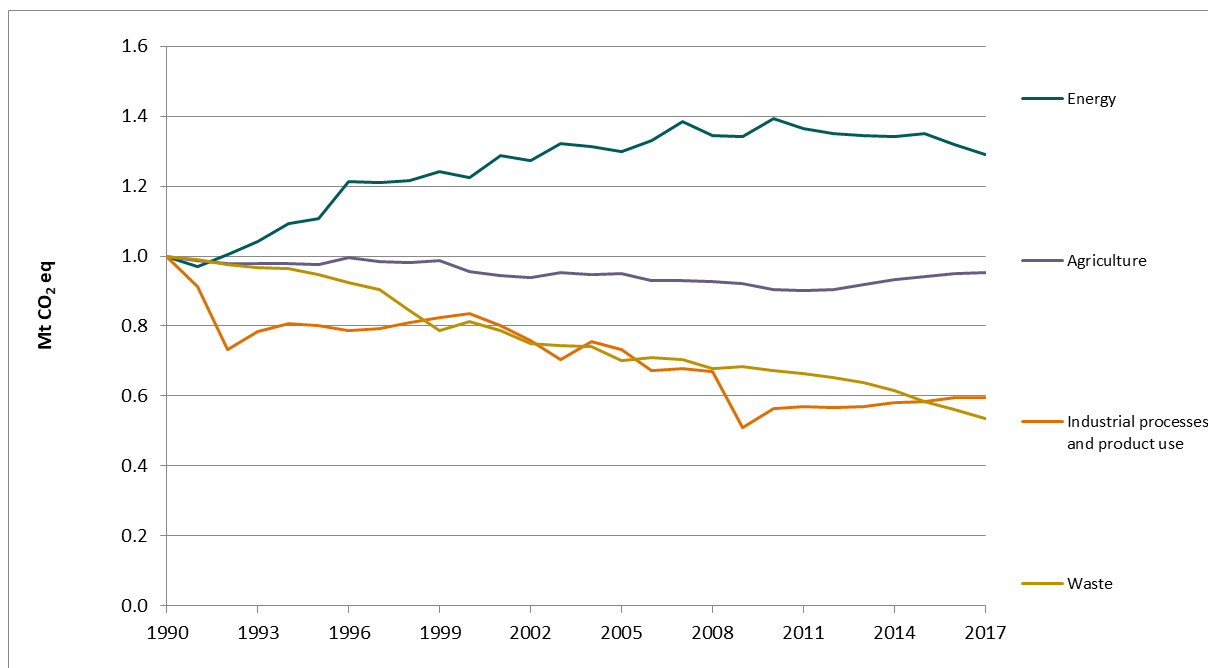


Figure 3 illustrates the yearly evolution of GHG emissions from the IPCC sectors (not including LULUCF) in percentage change, relative to 1990.

Table 1. Total emissions of greenhouse gases by sources and removals in Norway 1990-2016. Million tonnes of CO₂ equivalents.

Year	Energy	Industrial processes and product use	Agriculture	LULUCF	Waste	Total with indirect CO ₂ and without LULUCF	Total with indirect CO ₂ and with LULUCF	Indirect CO ₂ emissions
1990	29.8	14.5	4.7	-10.0	2.2	51.2	41.2	0.6
1995	33.0	11.6	4.6	-13.8	2.1	51.3	37.5	0.9
2000	36.4	12.1	4.5	-24.4	1.8	54.8	30.4	1.0
2005	38.7	10.6	4.5	-25.1	1.6	55.4	30.2	0.5
2008	40.0	9.7	4.3	-27.7	1.5	55.6	27.9	0.4
2009	39.9	7.4	4.3	-30.3	1.5	53.2	22.8	0.3
2010	41.5	8.2	4.2	-26.5	1.5	55.5	29.0	0.3
2011	40.7	8.2	4.2	-28.0	1.5	54.6	26.7	0.3
2012	40.2	8.2	4.2	-24.5	1.5	54.1	29.6	0.3
2013	40.0	8.3	4.3	-25.2	1.4	54.0	28.8	0.3
2014	40.0	8.4	4.4	-24.1	1.4	54.1	30.1	0.4
2015	40.2	8.5	4.4	-23.2	1.3	54.5	31.2	0.4
2016	39.3	8.6	4.5	-23.8	1.3	53.6	29.8	0.3
2017	38.4	8.6	4.5	-25.0	1.2	52.7	27.7	0.3

Source: Statistics Norway/Norwegian Environment Agency/Norwegian Institute of Bioeconomy Research

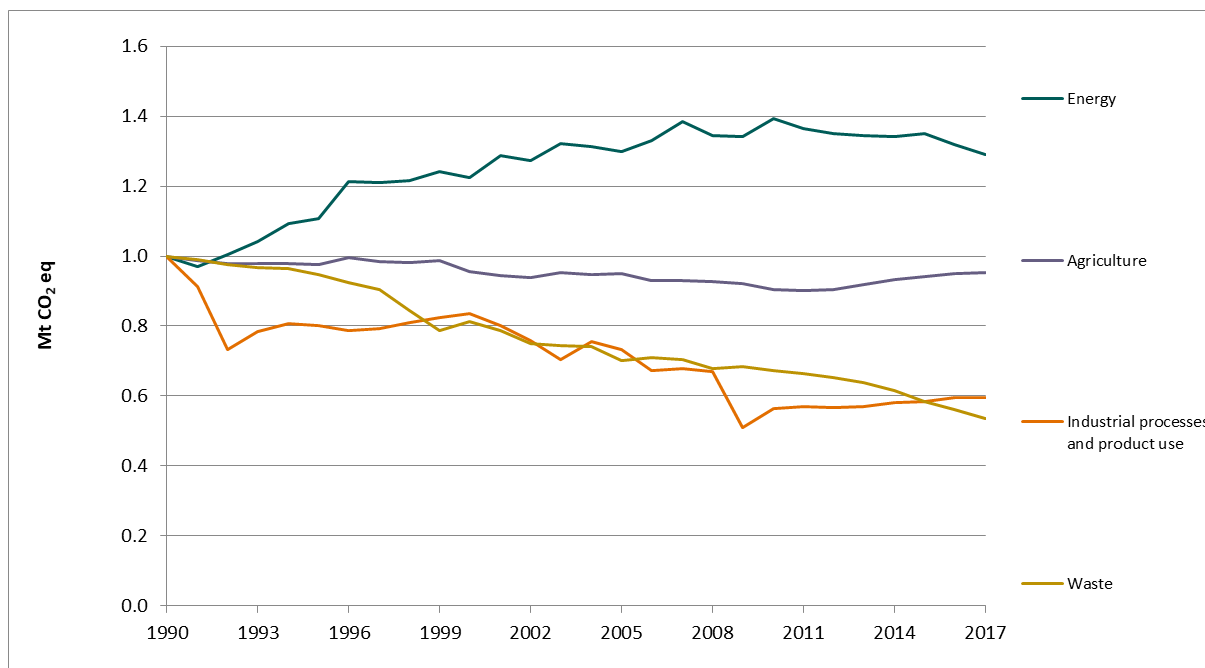


Figure 3. Changes in emissions of greenhouse gases, relative to 1990, illustrated by UNFCCC source categories, 1990-2017. Index 1990 = 1. Source: Statistics Norway/Norwegian Environment Agency

Norway has experienced economic growth since 1990, generating a general growth in emissions. In addition, the offshore petroleum sector has expanded significantly for the past 20 years. Together this has resulted in higher CO₂ emissions from energy use, both in energy industries and transport. Looking at the overall trend from 1990 to 2017, emissions increased by 3 per cent.

The downward trend in GHG emissions from the industry sector can be explained, in the early 1990's, by the implementation of policies and measures in the metal industry, resulting in less emission intensive production methods and later in the 2000's by close-downs and production reductions mainly in the metal industry as well.

Emissions from agriculture have decreased by 4.8 per cent since 1990 due to reductions of activity in the agriculture sectors. The downward trend in GHG emissions from the waste sector is due to reductions of waste amounts disposed at landfills.

Emission inventory of the different greenhouse gases

CO₂ is by far the largest contributor to the total GHG emissions, followed by CH₄, N₂O, and then the fluorinated gases PFCs, SF₆ and HFCs (Figure 3).

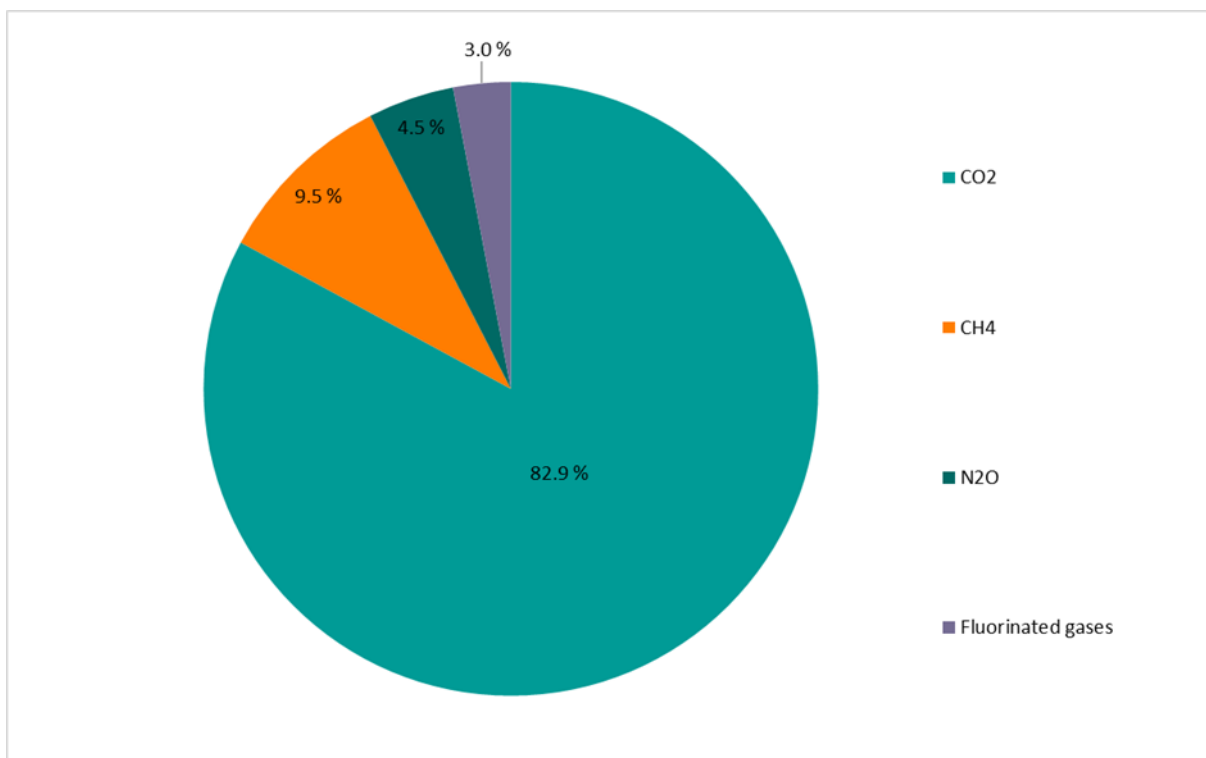


Figure 4. Distribution of emissions of greenhouse gases in Norway by gas, 2017.
Source: Statistics Norway/Norwegian Environment Agency

Figure 5 illustrates the changes in per cent for the different greenhouse gases for the period 1990 to 2017. The overall increasing total emission trend of CO2 has been weakened by decreased emissions of fluorinated gases due to SF6 and PFCs emissions reduction.

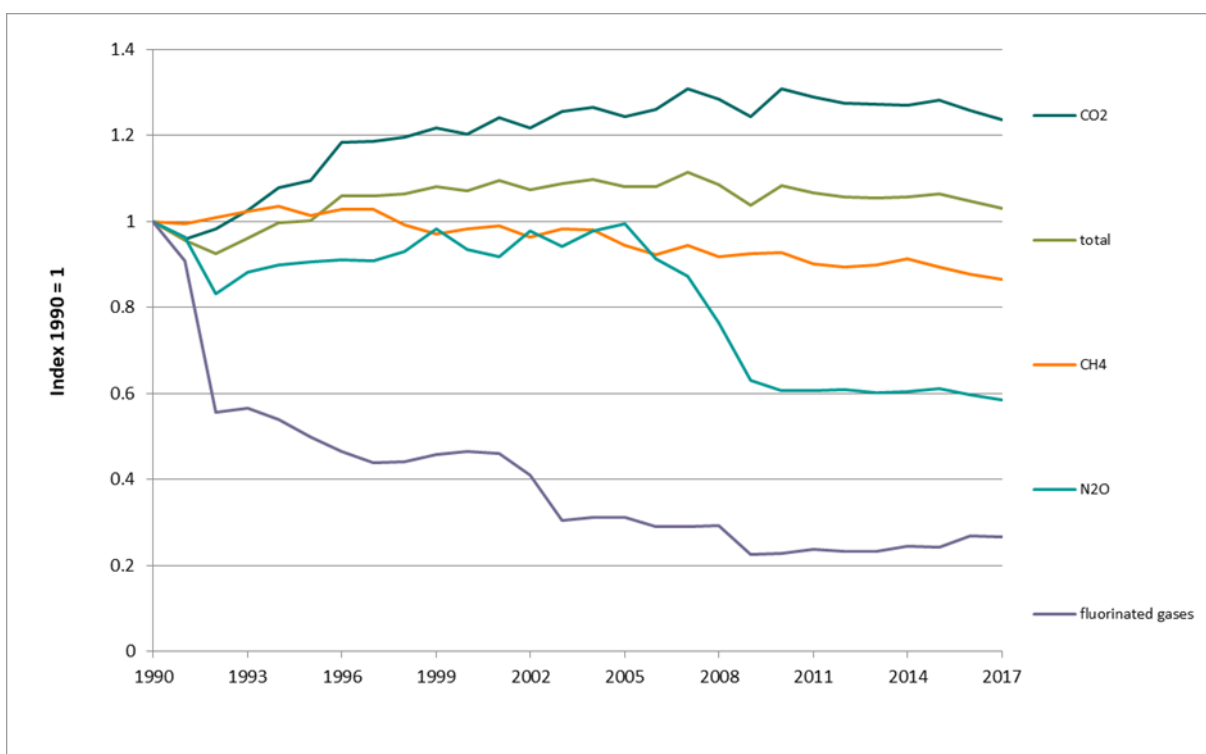


Figure 5. Changes in emissions of greenhouse gases, relative to 1990, by gas, 1990-2017. Index 1990 = 1.

Source: Statistics Norway/Norwegian Environment Agency

CO₂ emissions increased significantly from 1990 to 2017 with 8.4 million tonnes. The increases of natural gas use in gas turbines in the oil and gas extraction industry have been the most important contributor to the overall CO₂ increase.

Emissions of CH₄ and N₂O decreased by 0.8 and 1.7 million tonnes CO₂ equivalents, respectively. During the same period, PFCs and SF₆ emissions significantly decreased with 3.8 and 2.0 million tonnes CO₂ equivalents, respectively, while HFCs has increased from almost 0 to 1.4 million tonnes CO₂ equivalents.

Emission trends by sector

Figure 6 illustrates the 2017 distribution of Norwegian GHG emissions by IPCC classification of sources. The energy sector is by far the most important source of emissions, contributing to 72.9 per cent of the national GHG emissions.

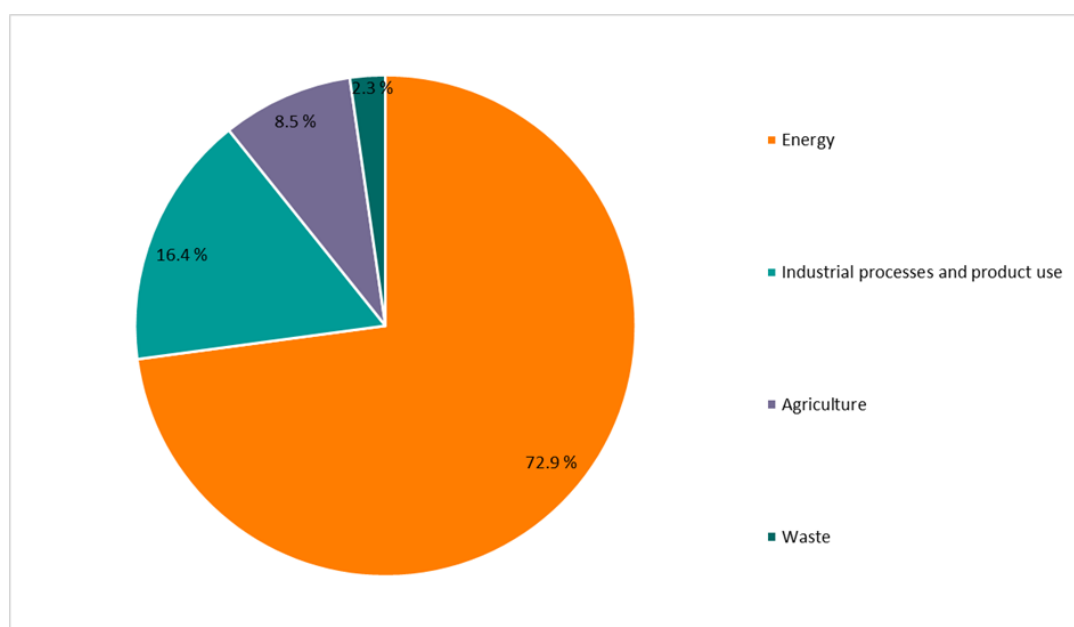


Figure 6. Distribution of GHG emissions in Norway in 2017 by sector, excluding LULUCF.

Source: Statistics Norway/Norwegian Environment Agency

Figure 7 displays GHG emissions trends by sectors between 1990 and 2017. The Energy sector is divided into its five main sub-sectors: fuel combustion in energy industries, fuel combustion in manufacturing industries and construction, fuel combustion in transport, fuel combustion in other sectors, and fugitive emissions from fuels.

While emissions have decreased for most of the sectors, emissions from energy industries and transport have significantly increased since 1990.

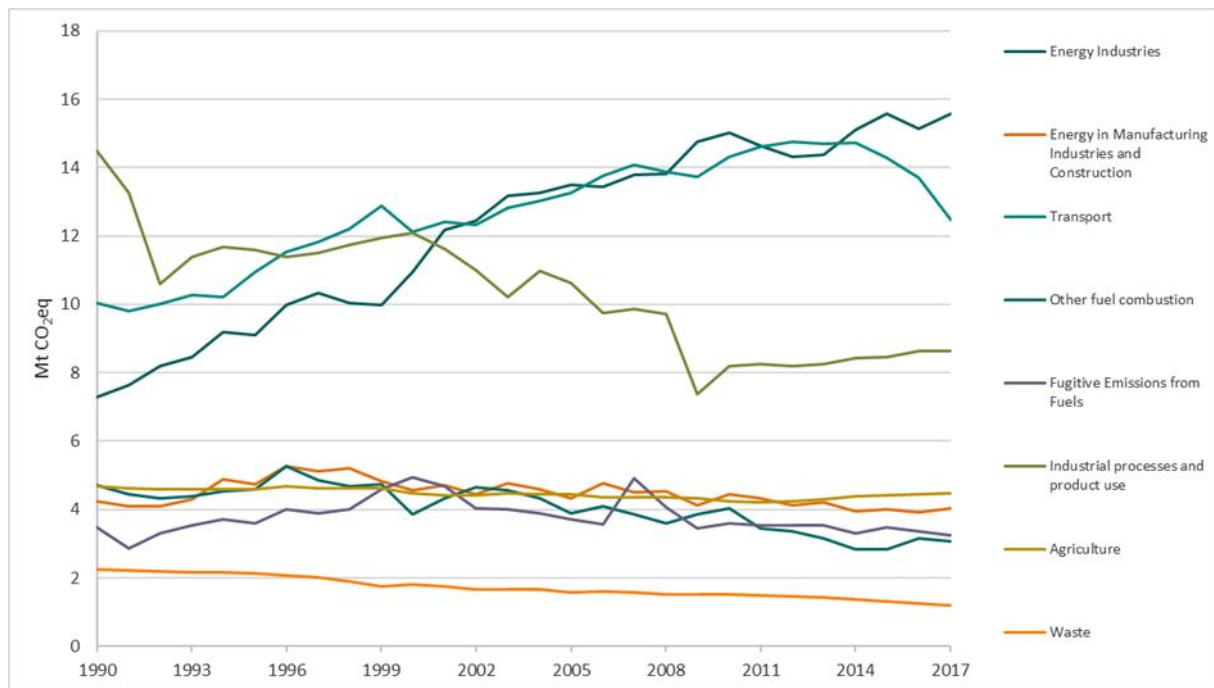


Figure 7. Development of emissions of all GHG (Mtonnes CO₂ eq.) from the different sectors and energy sub-sectors, excluding LULUCF, 1990-2017. Source: Statistics Norway/Norwegian Environment Agency

Energy

The energy sector consist of fuel combustion in the following sub-sectors:

- Energy industries (such as the oil and gas industries, electricity production and district heating)
- Transport (such as road transport, sea transport and aviation)
- Manufacturing industries and construction (such as machinery used at construction sites)
- Fugitive emission from fuels (such as evaporative emissions from oil and gas extraction)
- Other combustion (such as agriculture, forestry and fisheries, residential sector and commercial/institutional sectors)

Emission changes from 1990 to 2017, relative to 1990, are presented for various sub-sectors in the energy sector in figure 8.

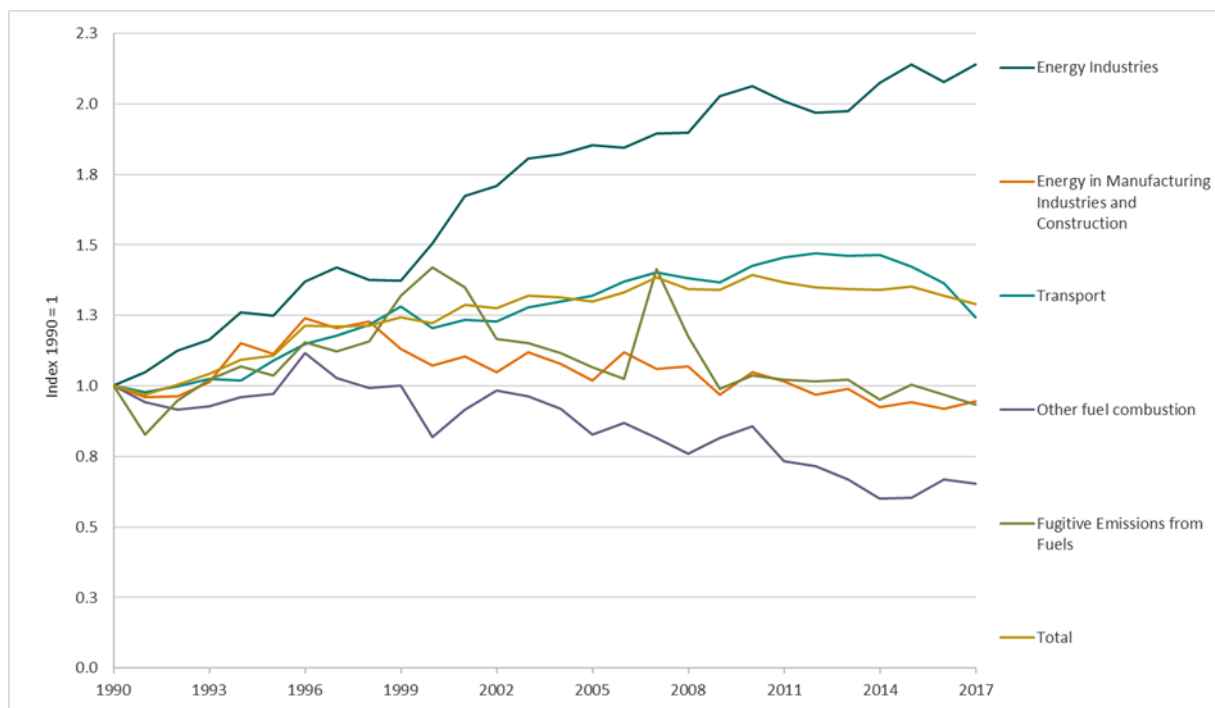


Figure 8. Changes in emissions of greenhouse gases, relative to 1990, for the various sub-sectors within the energy sector, 1990-2017. Index 1990 = 1. Source: Statistics Norway/Norwegian Environment Agency

The GHG emissions from the energy sector increased by 29.0 per cent from 1990 to 2017, primarily due to increased activity in oil and gas extraction and transport, specifically road transportation.

Since 2010, the emissions in the energy sector have decreased each year, except for 2015. From 2016 to 2017, emissions decreased by 2.2 per cent.

Emissions from fuel combustion in **Energy Industries** were 114.0 per cent higher in 2017 than in 1990. They increased by 3.0 per cent from 2016 to 2017. The main emission source in the Energy Industries sub-sector, oil and gas extraction, has played an important role in the national economy in recent decades. On the offshore oil and gas installations, electricity and pumping power is principally produced by gas turbines, and to a lesser extent, diesel engines.

In 2017, emissions from energy use in oil and gas extraction contributed to 24.4 per cent of the national GHG emissions. In 1990, the corresponding contribution was 11.6 per cent. The growth can be explained by the increase of oil and gas production and the increase of energy demand in extraction, due to aging of oil fields and transition from oil to gas.

Electricity production is largely dominated by hydroelectric generation. Between 1990 and 2017, important exceptions are gas fired electricity power plants, waste incineration power plants and a small coal combustion plant (6 MW) on the island of Spitsbergen.

Industrial emissions related to fuel combustion³ originate to a large extent from the production of raw materials and semi-manufactured goods, e.g. alloys, petrochemicals, paper and minerals. Energy

³ Includes mainly emissions from use of oil or gas for heating purposes. Does not include consumption of coal as feedstock and reduction medium, which is included in the industrial process category.

related emissions from **Manufacturing Industries and Construction** have remained relatively stable since 1990, with a small decrease of 0.2 Mtonnes CO₂eq from 1990 to 2017. Between 2016 and 2017, emissions have increased by 3.0 per cent.

Emissions from **Transport** showed an overall increase of 24.2 per cent from 1990 to 2017, with a decrease of 8.9 per cent from 2016 to 2017. The highest emissions from transport since 1990 was 14.8 million tonnes in 2012. The share of transport in the total GHG emissions has increased from 19.6 per cent in 1990 to 23.7 per cent in 2017. In 2017, road transportation accounts for 70.3 per cent of emissions from the transport sub-sector, while emissions from navigation and civil aviation accounts for 20.4 and 8.9 per cent, respectively. Due to the fact that most railways are electrified in Norway, emissions of GHG from this source are insignificant.

GHG emission trends from the main transport modes are illustrated in Figure 9.

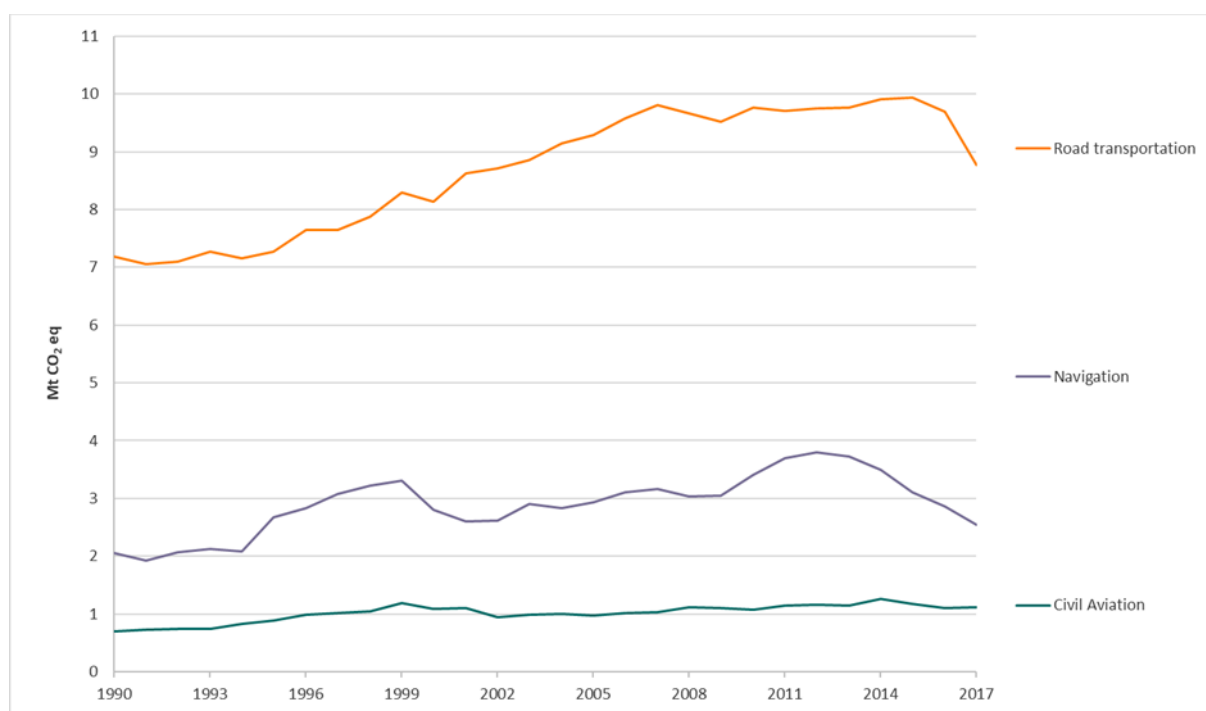


Figure 9. Emissions in million tonnes CO₂ equivalents from the most important modes of transport, 1990-2017. Source: Statistics Norway/Norwegian Environment Agency

GHG emissions from road transportation increased by 22.1 per cent from 1990 to 2017 and contributed to 16.6 per cent of the national GHG emissions in 2017. This trend is mainly due to the increase of activity in goods transport, as a response to higher economic activity. From 2016 to 2017, emissions decreased by 9.5 per cent. In addition to a reduced activity, the decreased emissions observed since 2007 could for the first years after be explained by the switch from petrol to diesel driven passenger cars, due to the implementation of a CO₂ differentiated tax in 2007. However, in the later years a blending requirement of biofuels have increased consumption of bio diesel and bio ethanol and hence reduced CO₂ emissions to be reported. In addition, the sales of electric vehicles have gradually increased since 2011, and added up to 21% of personal cars and 2% of light duty vehicles in 2017, due to economic incentives.

Domestic navigation contributed to the national total GHG emissions by 4.8 per cent in 2017. Emissions from navigation increased mainly due to an increase of activity related to the oil and gas

extraction sector. Since the year 2012, the emissions have been reduced by 33.0 per cent. During the period 1990-2017, emissions have increased by 23.7 per cent.

Domestic civil aviation contributed to 2.1 per cent of the national GHG emissions in 2017. Emissions from civil aviation have increased by 58.4 per cent since 1990, but the substitution of older planes by new and more energy efficient planes has played an important role to limit the emission growth.

The sub-sector “**Other fuel combustion**” (**Feil! Fant ikke referansekilden.**) includes, in particular, fuel combustion in agriculture, forestry and fisheries, residential sector and commercial/institutional sectors (CRF categories 1A4). The total emissions from CRF sector 1A4 were 2.9 million tonnes of CO₂ equivalents in 2017. Emissions decreased by 35.6 per cent from 1990 to 2017, and decreased by 3.0 per cent from 2016 to 2017.

In 2017, GHG emissions from residential sources (stationary and mobile) accounted for 31.7 per cent of emissions from the “other fuel combustion” sub-sector. Emissions from the residential subsector have been reduced by 48.3 per cent since 1990, mainly due to the electrification of heating infrastructures. However, temperature variations and changes in electricity prices have at times reversed this trend.

Emissions from stationary combustion in the residential subsector are climate-dependent. Indeed, mild winter can lead to relatively lower consumption of fuels and thus reduced emissions. Whereas dry and cold winter can lead to relatively higher emissions. Since 1990, emissions from stationary combustion in the residential sector have decreased by 69.7 per cent, mainly due to decreased energy consumption.

Emissions from commercial/institutional sources (mobile and stationary) have decreased by 12.8 per cent since 1990. Emissions from commercial/institutional stationary sources decreased by 53.9 per cent from 1990 to 2017, whereas emissions from mobile sources increased by 85.7 per cent between 1990 and 2017.

The sub-sector “**Fugitive emissions from fuels**” in **Feil! Fant ikke referansekilden.** refers to emissions from oil and gas activities such as flaring of natural gas, leakages and venting of methane. Indirect CO₂ emissions from NMVOC emitted during the loading and unloading of oil tankers are also accounted for in this sub-sector. Fugitive emissions from fuels contributed to 6.1 per cent of the national GHG emissions in 2017 and to 8.4 per cent of the GHG emissions within the energy sector. Fugitive emissions from fuels have decreased by 6.8 per cent since 1990 with a decrease of 3.8 per cent between 2016 and 2017.

The reduced emissions from flaring since 1990 are partly explained by the introduction of tax on gas flared off shore from 1991 and implemented technical measures. The amount of gas flared may fluctuate from year to year due to variation of startups, maintenance and interruption in operation.

Industrial processes and product use

The industrial processes and other product use (IPPU) sector accounted for 16.4 per cent of the national GHG emissions in 2017. The emissions from this sector decreased by 40.5 per cent from 1990 to 2017. Emissions remained stable between 2016 and 2017.

Metal Industry is the main source of emissions within the IPPU sector in the period 1990-2017. It contributed indeed to 56.1 per cent of the GHG emissions from the IPPU sector in 2017. The other main contributing sources in 2017 were Product uses as substitutes for ODS, Mineral Industry and Chemical Industry. They contributed to 16.3, 11.9 and 11.2 per cent of the GHG emissions from the IPPU sector, respectively.

Figure 10 shows the variations in the contribution to GHG emissions from 1990 to 2017 of the different IPPU sub-sectors.

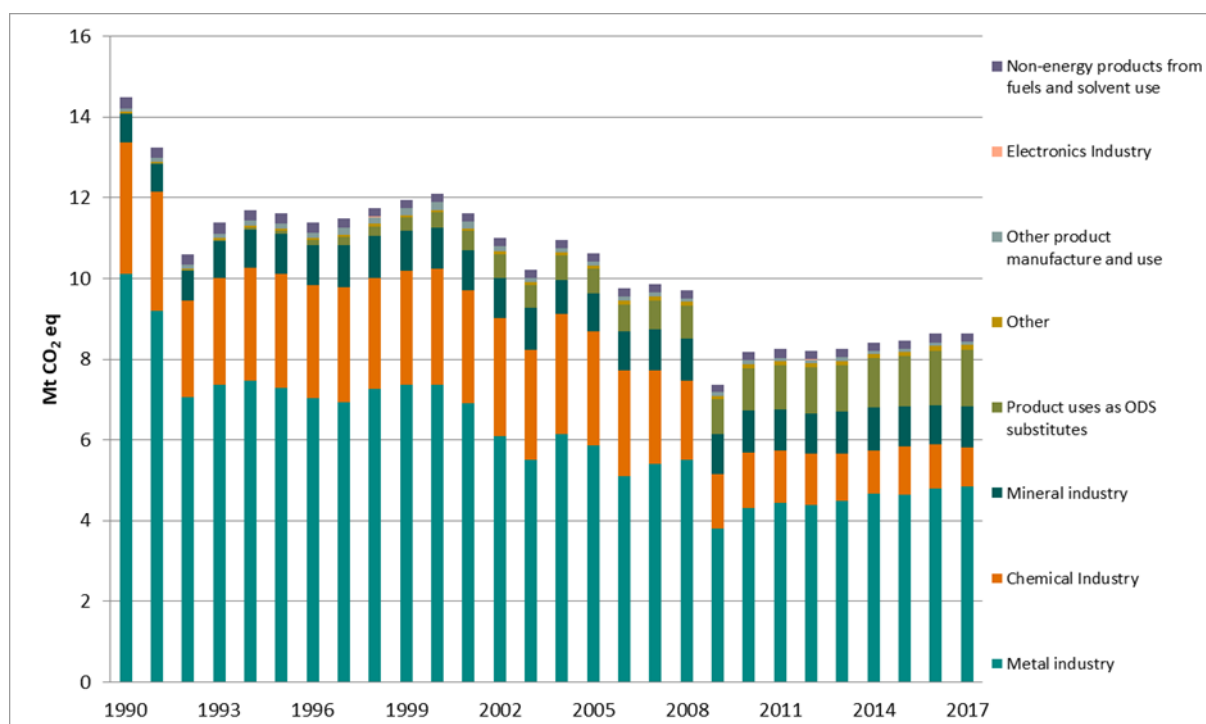


Figure 104. Total greenhouse gas emissions (Mtonnes CO₂-eq.) in the IPPU sub-sector in Norway, 1990-2017⁴. Source: Statistics Norway/Norwegian Environment Agency

During the first half of the 20th century, a large-scale industrialization took place in Norway. Many industrial communities appeared around the large hydroelectric resources particularly in the western parts of the country. Typical products were raw materials and semi-manufactured goods such as aluminium and ferroalloys. The main energy source has always been hydroelectricity. However, fossil fuels have been used as reducing agents or raw materials. Greenhouse gases are then emitted as process related gases.

9.2 per cent of national GHG emissions came from **Metal industry** in 2017, whose emissions increased by 0.7 per cent from 2016 to 2017.

⁴ Under Other production, Norway reports the two source categories: pulp and paper and food and drink.

The largest contributors to the GHG emissions from Metal Production in 2017 are productions of ferroalloys and aluminium. Emissions from those productions constituted more than 97 per cent of emissions from Metal industry in 2017.

In 1990, PFCs emissions from aluminium production contributed to 7.6 per cent of the national GHG emissions, while in 2017, it has been reduced to 0.2 per cent. Emissions of PFCs have decreased by 96.6 per cent since 1990 and by 29.7 per cent between 2016 and 2017.

Since 2010, production of ferroalloys has been the most important source of GHG emissions within the metal production category. The GHG emissions from ferroalloys production amounted to 2.6 million tonnes of CO₂ equivalents in 2017 and accounted for 5.0 per cent of the national total GHG emissions. Emissions from production of ferroalloys increased by 3.3 per cent from 1990 to 2017, with a 1.1 per cent increase from 2016. The large increase in emissions from 2009 to 2010 (50.2 per cent) is due to a low production level in 2009. The production level in 2009 is also lower than 2008 and reflects the lower economic activity due to the economic recession.

In 1990, SF₆ from magnesium foundries accounted for 4.0 per cent of the national total GHG emissions. Emissions decreased until the closure of the plant in 2007. Reductions in SF₆ emissions over the period are, in the early 90s, mainly due to improvements in the production processes, in 2002, due to the closing down of production of cast magnesium and in 2006, due to the closing down of secondary magnesium production.

Emissions from **Mineral Industry** were 1.0 million tonnes in 2017, which accounted for 1.9 per cent of the national GHG emissions. Emissions increased by 40.9 per cent from 1990 to 2017, mainly due to the increase of clinker and lime production in more recent years. Emissions from Mineral industry increased by 5.5 per cent from 2016 to 2017.

In 2017, the CO₂ process emissions from cement production were 1.5 per cent of the national GHG emissions. They have increased by 20.7 per cent since 1990, due to increased production of clinker, with an increase of 11.9 per cent from 2016 to 2017.

The Chemical Industry includes primarily N₂O from nitric acid production and CO₂ from production of ammonia and carbides. The GHG emissions from this sub-sector amounted to 1.0 million tonnes of CO₂ equivalents in 2017, which represented 1.8 per cent of the national GHG emissions. Emissions have decreased by 70.2 per cent since 1990, mainly due to the reduction of emissions from the production of nitric acid, ammonia and carbides. Emissions have decreased by 9.8 per cent since 2016 mainly due to the decrease of ammonia production.

Agriculture

In 2017, 8.5 per cent of the national GHG emissions originated from agriculture, corresponding to 4.5 million tonnes of CO₂ equivalents. Emissions from agriculture have decreased by 4.8 per cent since 1990 and increased by 0.2 per cent since 2016.

The largest sources of GHGs within the agriculture sector are “enteric fermentation” (CH₄) and “agricultural soils” (N₂O). In 2017, these sub-sectors represented 52.1 per cent and 36.3 per cent of the agriculture sector, respectively, while “manure management” represented 9.6 per cent.

The main driver behind the emission trend in agriculture is the development in the number of animals for the significant animal groups. The main reasons for the decreasing trend in GHG

emissions are the reduction of nitrogen content in the synthetic fertilizers used, use of more concentrate and more effective milk production which led to reduction of the number of dairy cows.

Enteric fermentation contributed to 2.3 million tonnes of CO₂ equivalents in 2017, corresponding to 4.4 per cent of the national GHG emissions. This sub-sector constituted almost 90 per cent of the overall CH₄ emissions from agriculture for the period 1990-2017.

The emissions of N₂O from **agricultural soils** amounted to 1.6 million tonnes of CO₂ equivalents in 2017. This accounted for 67.7 per cent of the national N₂O emissions in 2017 and 3.2 per cent of the national GHG emissions.

In 2017, emissions CH₄ and emissions of N₂O from **manure management** amounted to 0.3 million and 0.1 million tonnes of CO₂ equivalents, respectively. This accounted for 0.8 per cent of the Norwegian GHG emissions.

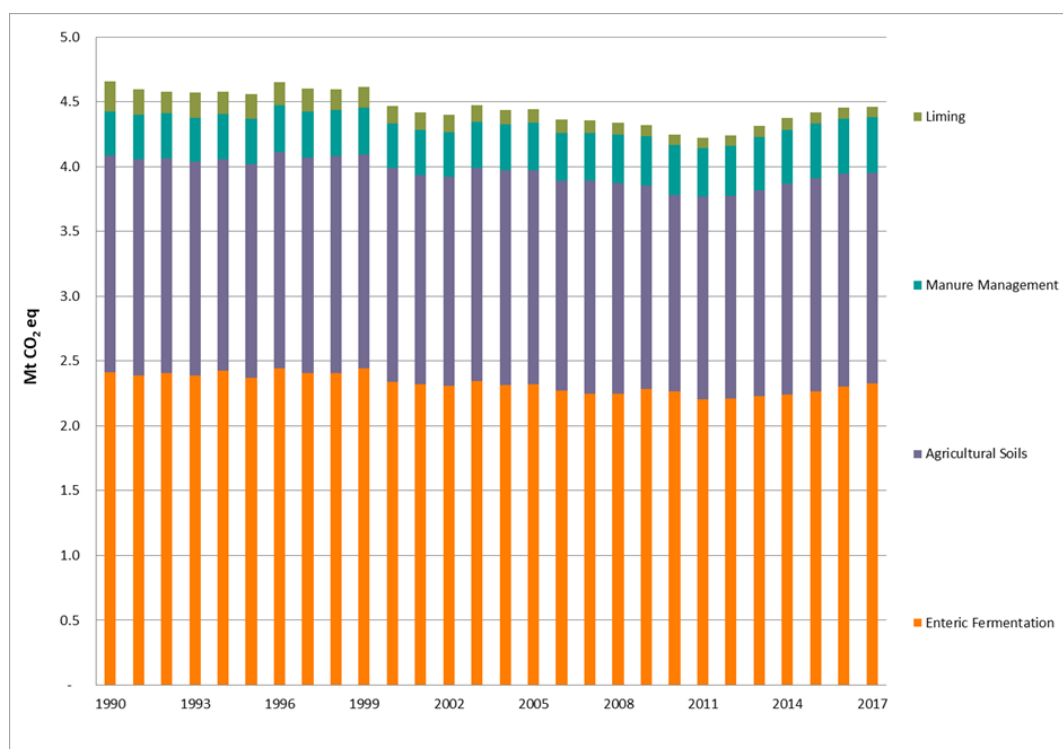


Figure 11 Total greenhouse gas emissions (Mtonnes CO₂-eq.) in the agriculture sub-sectors in Norway, 1990-2017. Source: Statistics Norway/Norwegian Environment Agency

Land Use, Land-Use Change and Forestry (LULUCF) and KP-LULUCF

The LULUCF sector differs from the other sectors in that it can function as both a source of atmospheric emissions and a sink of emissions through the removal of atmospheric CO₂. The balance of the two is net emissions or removals in the LULUCF sector.

In 2017, the net removal in the LULUCF sector was 24.9 million tonnes CO₂ equivalents, which correspond to almost half of the national GHG emissions that year. The average annual net sequestration from the LULUCF sector has been 22.3 million tonnes CO₂ equivalents per year for the period 1990-2017.

The calculated changes in carbon depend upon several factors such as growing conditions, harvest levels, management practices and land use changes.

The area distribution of the land-use categories for Norway in 1990 and 2017 is illustrated in Figure 12. The figure shows that the net changes in land-area distribution in Norway from 1990 to 2017 have been relatively small; only the area of settlements has increased slightly, while the other land-use categories have decreased.

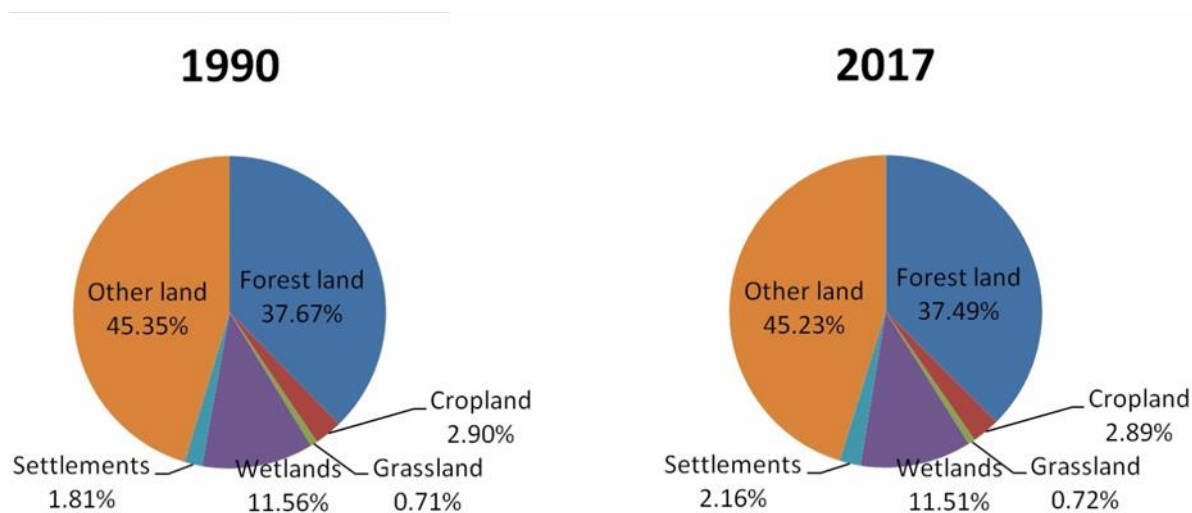


Figure 12 Area (%) distribution between the IPCC land-use categories, 1990 and 2017.

Source: The Norwegian Institute of Bioeconomy Research

Figure 3 illustrates net emissions and removals of CO₂-eq by land use-category. As can be seen, all land-use categories other than forest land and harvested wood products showed net emissions in 2017. In total, the emissions were calculated to about 4.1 million tonnes of CO₂ equivalents, of which the main emissions came from the land-use categories cropland and settlements. Emissions from settlements increased by more than two times from 1990 to 2017, and are, in 2017, responsible for the second largest emissions from the LULUCF sector, with 2.1 million tonnes of CO₂ equivalents.

Forest land was the major contributor to the net sequestration of CO₂ in the sector. In 2017, the total net removals from forest land were 29.1 million tonnes of CO₂. Within this category, land converted to forest land contributed with 0.51 million tonnes of CO₂.

The figure clearly shows that the net removals from forest land has increased from 1990 to 2017. During this time period, the total net sequestration of CO₂ from forest land increased by 152 per cent. The explanation for this growth is an increase in standing volume and gross increment, while the amount of CO₂ emissions due to harvesting and natural losses has been quite stable. The increase in living carbon stock is due to an active forest management policy over the last 60–70 years. The combination of the policy to re-build the country after the Second World War II and the demand for timber led to a great effort to invest in forest tree planting in new areas. These areas are now at their most productive age and contribute to the increase in living biomass and hence the carbon stock.

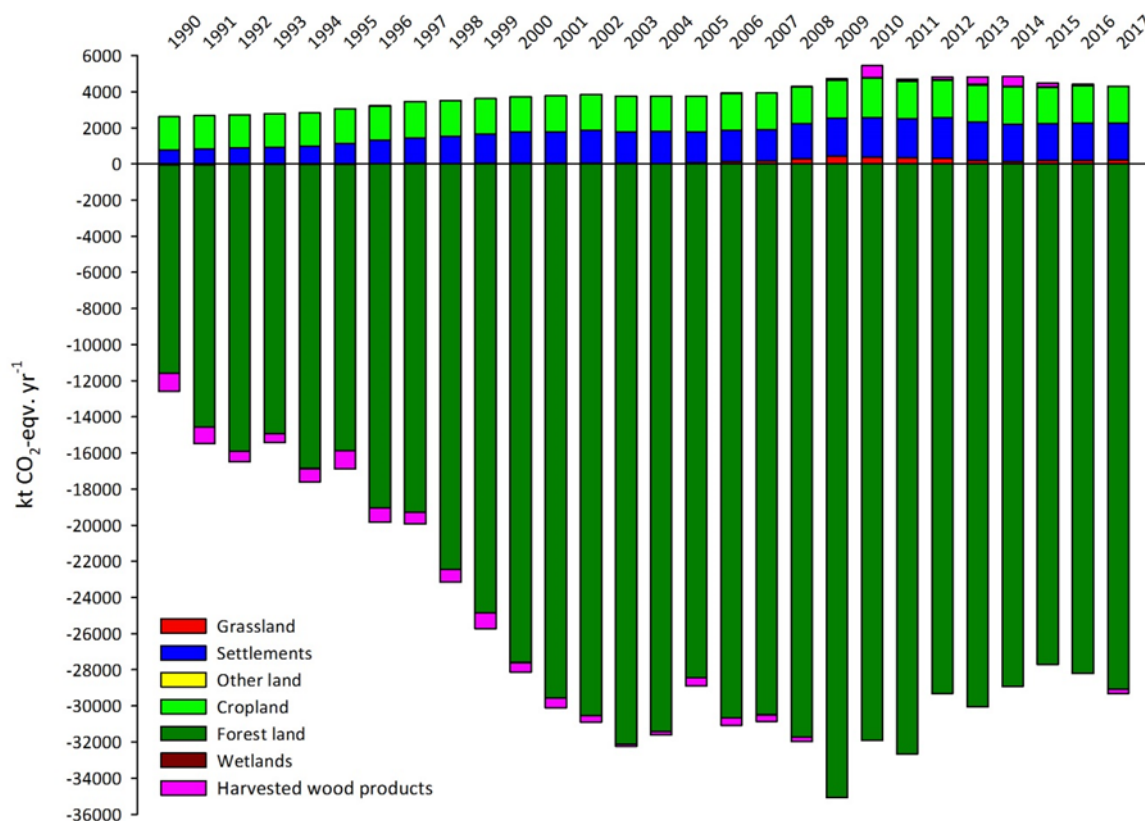


Figure 13 Net CO₂ emissions and removals (kt CO₂-equivalents per year) from the LULUCF sector by land-use category (forest land, cropland, grassland, wetlands, settlements, other land, and harvested wood products) from 1990 to 2017, including emissions of N₂O and CH₄.

Source: Norwegian Institute of Bioeconomy Research

All emissions and removals are estimated according to the 2013 Kyoto Protocol supplement (IPCC 2014).

Reporting on activities under Article 3.3 (Afforestation/reforestation and Deforestation) and forest management (Article 3.4) is mandatory for all Parties under the Kyoto Protocol. In addition, any activity elected in the first commitment period (2008-2012) is mandatory in the second commitment period (2013-2020). For the second commitment period, Norway has also elected the voluntary activities Cropland Management and Grazing Land Management in the accounting under Article 3.4.

Areas where afforestation and reforestation and deforestation activities have occurred in Norway are small compared to the area of forest management. As illustrated in Table, estimated C sequestration for the activity forest management is substantial, whereas net emissions occur from deforestation, cropland and grazing land management. In addition, C sequestration from afforestation/reforestation is estimated.

Table 2. CO₂, N₂O and CH₄ emissions (kt CO₂ eq yr⁻¹) and CO₂ removals of all pools for Article 3.3 and 3.4 under the Kyoto Protocol for the base year (1990) and for each of the first five years of the second commitment period.

Year	Net emissions (kt CO ₂ -eq yr ⁻¹)				
	Afforestation/ reforestation	Deforestation	Forest management	Cropland management	Grazing land management
1990			-12482.45	1786.98	-73.19
2013	-569.07	2279.38	-29118.20	1769.69	16.15
2014	-561.63	2158.26	-27923.20	1776.96	11.64
2015	-532.84	2157.39	-27035.01	1776.20	10.04
2016	-505.87	2230.14	-27719.40	1773.53	10.20
2017	-489.06	2218.46	-28914.54	1763.53	12.04

Source: Norwegian Institute of Bioeconomy Research

The accounting of emissions and removals from LULUCF towards Norway's commitment under the Kyoto protocol will be in accordance with Decision 2/CMP.7. The final quantity of emissions and removals for each year of the commitment period to be accounted towards Norway's commitment will be determined at the end of the commitment period, i.e. in 2022, when emissions and removals for the year 2020 have been reported. Until the year of accounting, emissions and removals from the Kyoto Protocol activities may be recalculated due to changes in activity data and/or methodology.

Preliminary accounting quantities from land use, land-use change and forestry for the first five years of the second commitment period under the Kyoto Protocol indicate that Norway will have a net removals slightly above 0.25 million tonnes of CO₂-equivalents in total for these five years. The preliminary accounting quantities from the activities, calculated according to Decision 2/CMP.7, comprise emissions (million tonnes of CO₂-equivalents) of 11 from deforestation and 0.4 from grazing land management; and removals of 2.6 from afforestation and reforestation, 9 from forest management and 0.07 from cropland management.

Waste

The waste sector, with emissions of 1.2 million tonnes of CO₂ equivalents in 2017, accounted for 2.3 per cent of the national GHG emissions.

This sector includes emissions from landfills (CH₄), wastewater handling (CH₄ and N₂O), biological treatment of solid waste and small-scale waste incineration (CO₂ and CH₄). Waste incineration with utilization of energy is included in the Energy sector.

Solid waste disposal on land (landfills) is the main sub-sector within the waste sector. It accounted for 81.5 per cent of the sector's total emissions in 2017. Whereas wastewater handling accounted for 12.2 per cent and biological treatment of solid waste for 6.2 per cent. Small-scale waste incineration accounted for 0.1 per cent.

GHG emissions from the waste sector have generally decreased since 1990. In 2017, emissions were 46.5 per cent lower than in 1990 and 4.6 per cent lower than in 2016. The total amount of waste generated increased by more than 60.4 per cent from 1995 to 2016, but due to the increase in material recycling and a ban against disposing biodegradable waste to landfills, methane emissions have decreased leading to a decrease in total emissions of greenhouse gases from the waste sector.

The distribution of the waste emissions by sub-sector is presented in figure 13.

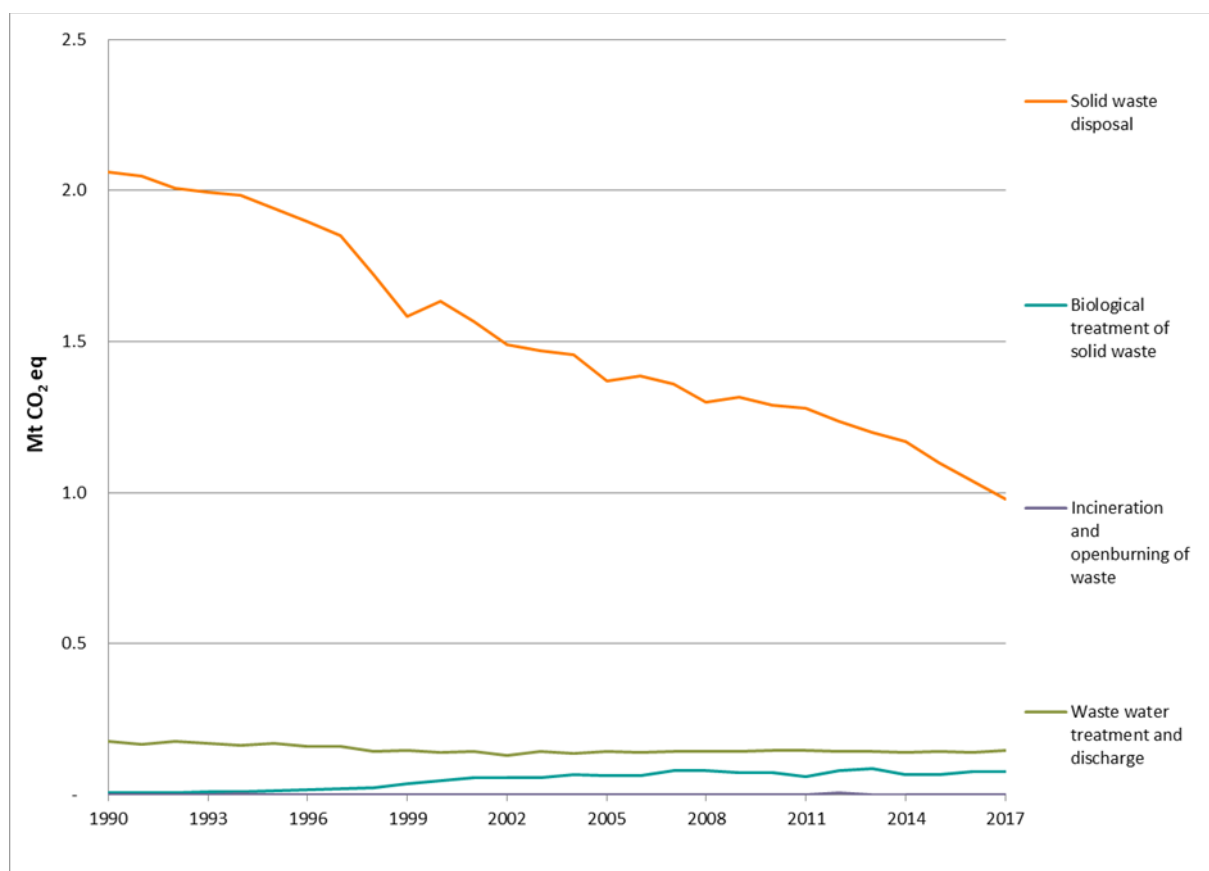


Figure 14 Total emissions of greenhouse gases (Mtonnes CO₂-eq.) in Norway from the waste sub-sectors, 1990-2017. Source: Statistics Norway/Norwegian Environment Agency

There has been a decrease of methane emissions from landfills since 1990, which has led to a decrease in methane emissions altogether. The reduction is due to a smaller amount of waste disposed at disposal sites.

In 1999, a tax was introduced on waste delivered to final disposal sites. Since July 2009, it is banned to deposit biodegradable waste to landfills. This results in further reduction of methane emissions.

Source categories in national and international reporting

Statistics Norway annually publishes official statistics on emissions to air, including greenhouse gases. These statistics form the basis for the reported emissions to UNFCCC, but the division between emission sources is somewhat different. While the CRF source category division is used for reporting and monitoring towards international commitments, the Statistics Norway source category division is frequently used nationally, for instance in mitigation analyses and evaluation of national targets regarding greenhouse gases. Table 2 and Table 3 shows the allocation of Statistics Norway source categories in CRF source categories and vice versa in 2017. For the LULUCF sector there is no official national statistics, and the CRF source categories are used most frequently both nationally and internationally.

Table 2 Share of Statistics Norway source categories in different CRF source categories in 2017

CRF source category	Statistics Norway source category	Share of Statistics Norway source categories per CRF source category
1A Fuel combustion activities	1.1 Oil and gas extraction - stationary combustion	37 %
	2.1 Manufacturing industries and mining - stationary combustion	10 %
	3.0 Energy supply	5 %
	4.1 Heating in other industries	2 %
	4.2 Heating in households	1 %
	5.1 Passenger cars	13 %
	5.2 Light duty vehicles	4 %
	5.3 Heavy duty vehicles	8 %
	5.4 Motorcycles and mopeds	0 %
	6.1 Railways	0 %
	6.2 Domestic aviation	4 %
	6.3 Coastal navigation	8 %
	6.4 Motorized equipment etc.	8 %
	9.9 Other	0 %
1B Fugitive emissions from fuels	1.1 Oil and gas extraction - stationary combustion	30 %
	1.2 Oil and gas extraction - process emissions	25 %
	2.1 Manufacturing industries and mining - stationary combustion	2 %
	2.2 Manufacturing industries and mining - process emissions	41 %
	4.1 Heating in other industries	0 %

	9.9 Other	1 %
1C CO2 transport and storage	1.2 Oil and gas extraction - process emissions	100 %
2A Industrial processes - Mineral industry	2.2 Manufacturing industries and mining - process emissions	99 %
	9.9 Other	1 %
2B Industrial processes- Chemical industry	2.1 Manufacturing industries and mining - stationary combustion	5 %
	2.2 Manufacturing industries and mining - process emissions	95 %
2C Industrial processes - Metal industry	2.2 Manufacturing industries and mining - process emissions	100 %
2D Industrial processes - Non-energy products from fuels and solvent use	4.1 Heating in other industries	4 %
	4.2 Heating in households	16 %
	5.3 Heavy duty vehicles	8 %
	9.3 Products containing fluorinated gases, solvents etc.	51 %
	9.9 Other	21 %
2E Industrial processes - Electronic industry	9.3 Products containing fluorinated gases, solvents etc.	100 %
2F Industrial processes - Product uses as substitutes for ODS	9.3 Products containing fluorinated gases, solvents etc.	100 %
2G Industrial processes - Other product manufacture and use	9.3 Products containing fluorinated gases, solvents etc.	75 %
	9.9 Other	25 %
2H Industrial processes – Other	2.2 Manufacturing industries and mining - process emissions	100 %
3A Enteric fermentation	7.1 Agriculture - enteric fermentation and manure	100 %
3B Manure management	7.1 Agriculture - enteric fermentation and manure	100 %
3D Agricultural soils	7.1 Agriculture - enteric fermentation and manure	28 %
	7.2 Agriculture - fertilizer and other	72 %
3F Field burning of agricultural residues	4.1 Heating in other industries	100 %
3G Liming	7.2 Agriculture - fertilizer and other	85 %
	9.9 Other	15 %
3H Urea application	7.2 Agriculture - fertilizer and other	100 %
5A Solid waste disposal	9.1 Landfill gas	100 %
5B Biological treatment of solid waste	9.9 Other	100 %
5C Incineration and open burning of waste	4.1 Heating in other industries	9 %
	9.9 Other	91 %
5D Wastewater treatment and discharge	9.9 Other	100 %

Table 3 Share of CRF source categories in different Statistics Norway source categories in 2017

Statistics Norway source category	CRF source category	Share of CRF source categories per Statistics Norway source category
1.1 Oil and gas extraction - stationary combustion	1A Fuel combustion activities	93 %
	1B Fugitive emissions from fuels	7 %
1.2 Oil and gas extraction - process emissions	1B Fugitive emissions from fuels	99 %
	1C CO2 transport and storage	1 %
2.1 Manufacturing industries and mining - stationary combustion	1A Fuel combustion activities	97 %
	1B Fugitive emissions from fuels	2 %
	2B Industrial processes- Chemical industry	1 %
2.2 Manufacturing industries and mining - process emissions	1B Fugitive emissions from fuels	16 %
	2A Industrial processes - Mineral industry	12 %
	2B Industrial processes- Chemical industry	11 %
	2C Industrial processes - Metal industry	59 %
	2H Industrial processes – Other	1 %
3.0 Energy supply	1A Fuel combustion activities	100 %
4.1 Heating in other industries	1A Fuel combustion activities	97 %
	1B Fugitive emissions from fuels	1 %
	2D Industrial processes - Non-energy products from fuels and solvent use	1 %
	3F Field burning of agricultural residues	1 %
	5C Incineration and open burning of waste	0 %
4.2 Heating in households	1A Fuel combustion activities	92 %
	2D Industrial processes - Non-energy products from fuels and solvent use	8 %
5.1 Passenger cars	1A Fuel combustion activities	100 %
5.2 Light duty vehicles	1A Fuel combustion activities	100 %
5.3 Heavy duty vehicles	1A Fuel combustion activities	99 %
	2D Industrial processes - Non-energy products from fuels and solvent use	1 %
5.4 Motorcycles and mopeds	1A Fuel combustion activities	100 %

6.1 Railways	1A Fuel combustion activities	100 %
6.2 Domestic aviation	1A Fuel combustion activities	100 %
6.3 Coastal navigation	1A Fuel combustion activities	100 %
6.4 Motorized equipment etc.	1A Fuel combustion activities	100 %
7.1 Agriculture - enteric fermentation and manure	3A Enteric fermentation	73 %
	3B Manure management	13 %
	3D Agricultural soils	14 %
7.2 Agriculture - fertilizer and other	3D Agricultural soils	94 %
	3G Liming	6 %
	3H Urea application	0 %
9.1 Landfill gas	5A Solid waste disposal	100 %
9.3 Products containing fluorinated gases, solvents etc.	2D Industrial processes - Non-energy products from fuels and solvent use	7 %
	2E Industrial processes - Electronic industry	0 %
	2F Industrial processes - Product uses as substitutes for ODS	89 %
	2G Industrial processes - Other product manufacture and use	4 %
9.9 Other	1A Fuel combustion activities	1 %
	1B Fugitive emissions from fuels	11 %
	2A Industrial processes - Mineral industry	3 %
	2D Industrial processes - Non-energy products from fuels and solvent use	12 %
	2G Industrial processes - Other product manufacture and use	6 %
	3G Liming	4 %
	5B Biological treatment of solid waste	22 %
	5C Incineration and open burning of waste	0 %
	5D Wastewater treatment and discharge	42 %

References

- Daasvatn, L., Flugsrud, K., Høie, H., Rypdal, K. & Sandmo, T. (1992): Modell for beregning av nasjonale utslipp til luft. Dokumentasjon (Model for calculation of national air emissions. Documentation), Interne notater 92/17: Statistics Norway (SSB-Statistisk sentralbyrå)
- Daasvatn, L., Flugsrud, K., Hunnes, O. K. & Rypdal, K. (1994): Beregning av regionaliserte utslipp til luft. Beskrivelse av modell og metoder for estimering (Calculation of emissions to air on a regional basis. Description of a model and estimation methods), Notater 94/16: Statistics Norway (SSB-Statistisk sentralbyrå)
- IPCC (2014): 2013 Revised Supplementary Methods and Good Practice Guidance Arising from the Kyoto Protocol. In Hiraishi, T., Krug, T., Tanabe, K., Srivastava, N., Baasansuren, J., Fukuda, M. & Troxler, T. G. (eds). Switzerland: IPCC
- Marklund, L. G. (1988): Biomassafunktioner för tall, gran och björk i Sverige: biomass functions for pine, spruce and birch in Sweden, Rapport 45: Swedish University of Agricultural Sciences (SLU-Sveriges lantbruksuniversitet, Institutionen för skogstaxering). 73 pp
- Petersson, H. & Ståhl, G. (2006): Functions for below-ground biomass of *Pinus sylvestris*, *Picea abies*, *Betula pendula* and *Betula pubescens* in Sweden. *Scandinavian Journal of Forest Research*, 21 (S7): 84-93
- Smith, A., Granhus, A., Astrup, R. (2016): Functions for estimating belowground and whole tree biomass of birch in Norway. *Scandinavian Journal of Forest Research*, 31 (6): 568-582
- Smith, A., Granhus, A., Astrup, R., Bollandsås, O.M., Petersson, H., (2014): Functions for estimating aboveground biomass of birch in Norway. *Scandinavian Journal of Forest Research*, 29 (6): 565-578.
- Statistics Norway (2008): Standard Industrial Classification, NOS report D 383: Statistics Norway. http://www.ssb.no/a/publikasjoner/pdf/nos_d383/nos_d383.pdf (English version: <http://www.ssb.no/en/klasse/#!/klassifikasjoner/6>)
- Tuomi, M., Thum, T., Järvinen, H., Fronzek, S., Berg, B., Harmon, M., Trofymow, J. A., Sevanto, S. & Liski, J. (2009): Leaf litter decomposition—Estimates of global variability based on Yasso07 model. *Ecological Modelling*, 220 (23): 3362-3371
- Tuomi, M., Rasinmäki, J., Repo, A., Vanhala, P. & Liski, J. (2011): Soil carbon model Yasso07 graphical user interface. *Environmental Modelling & Software*, 26 (11): 1358-1362