

IPCCs vitenskapelige vurderinger:

Hva betyr

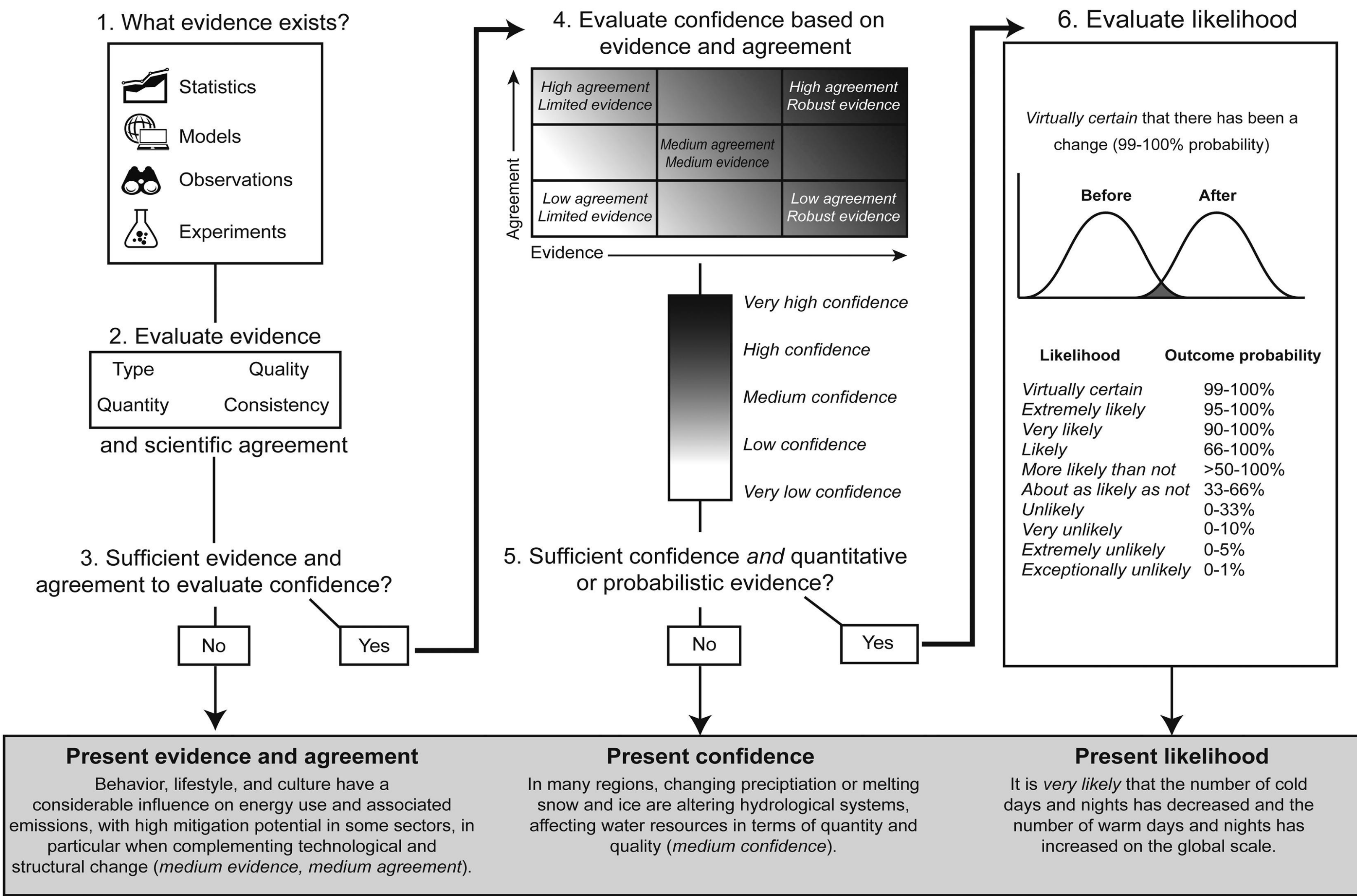
- **very likely**
- **medium evidence, low agreement**
- **high confidence**

etc.?

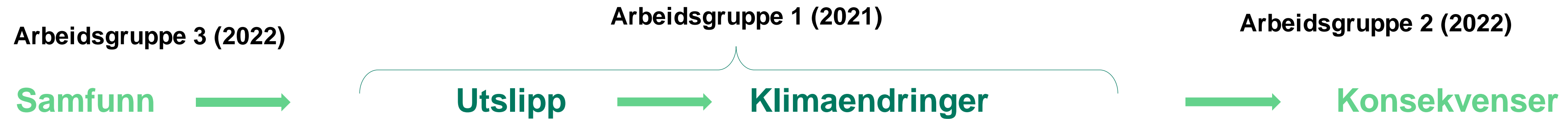
Eksempel (SR15, 2018):

Human activities are estimated to have caused approximately 1.0°C of global warming above pre-industrial levels, with a *likely* range of 0.8°C to 1.2°C. Global warming is likely to reach 1.5°C between 2030 and 2052 if it continues to increase at the current rate. (*high confidence*)

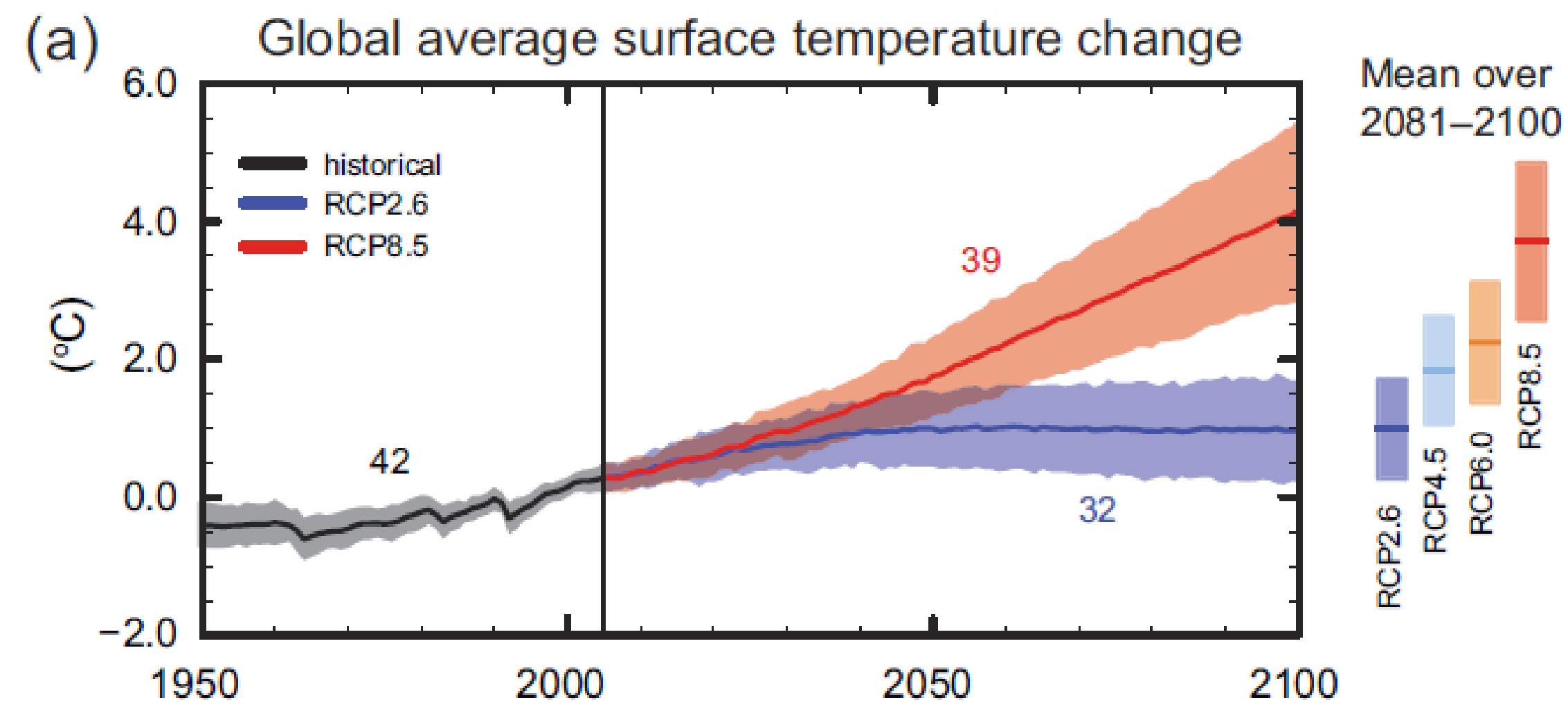
Evaluation and communication of degree of certainty in AR5 findings



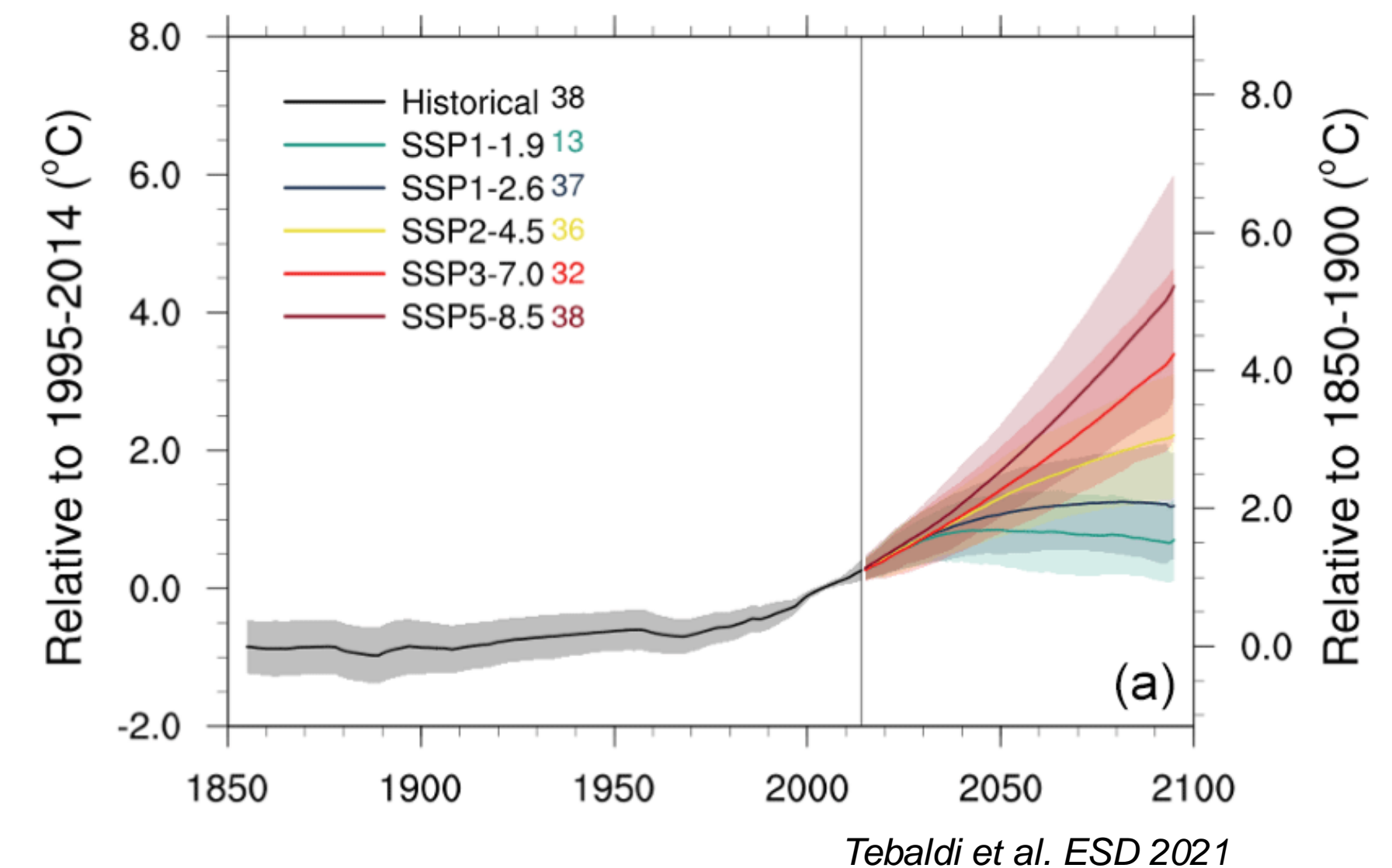
Scenarier i IPCC AR6:



AR5 WG1 SPM

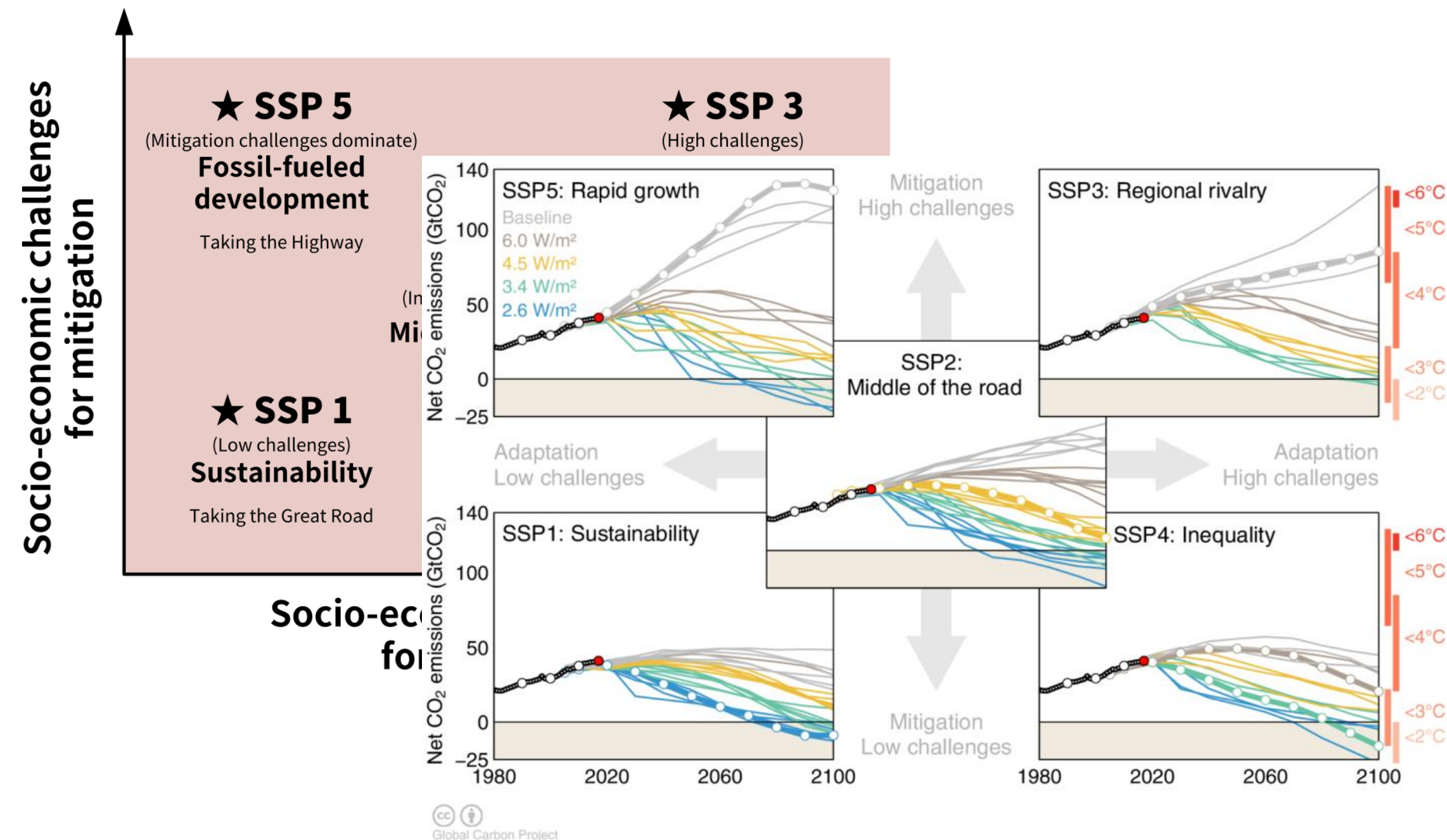
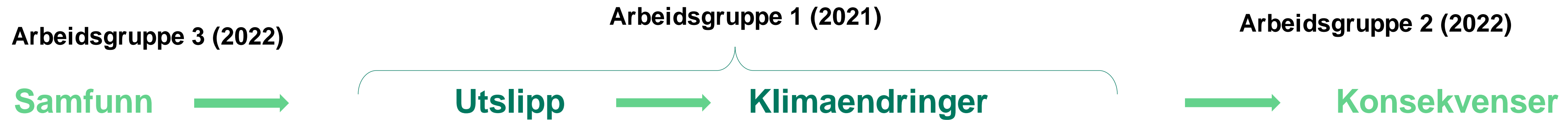


AR6 (NB: Ikke fra rapporten!)

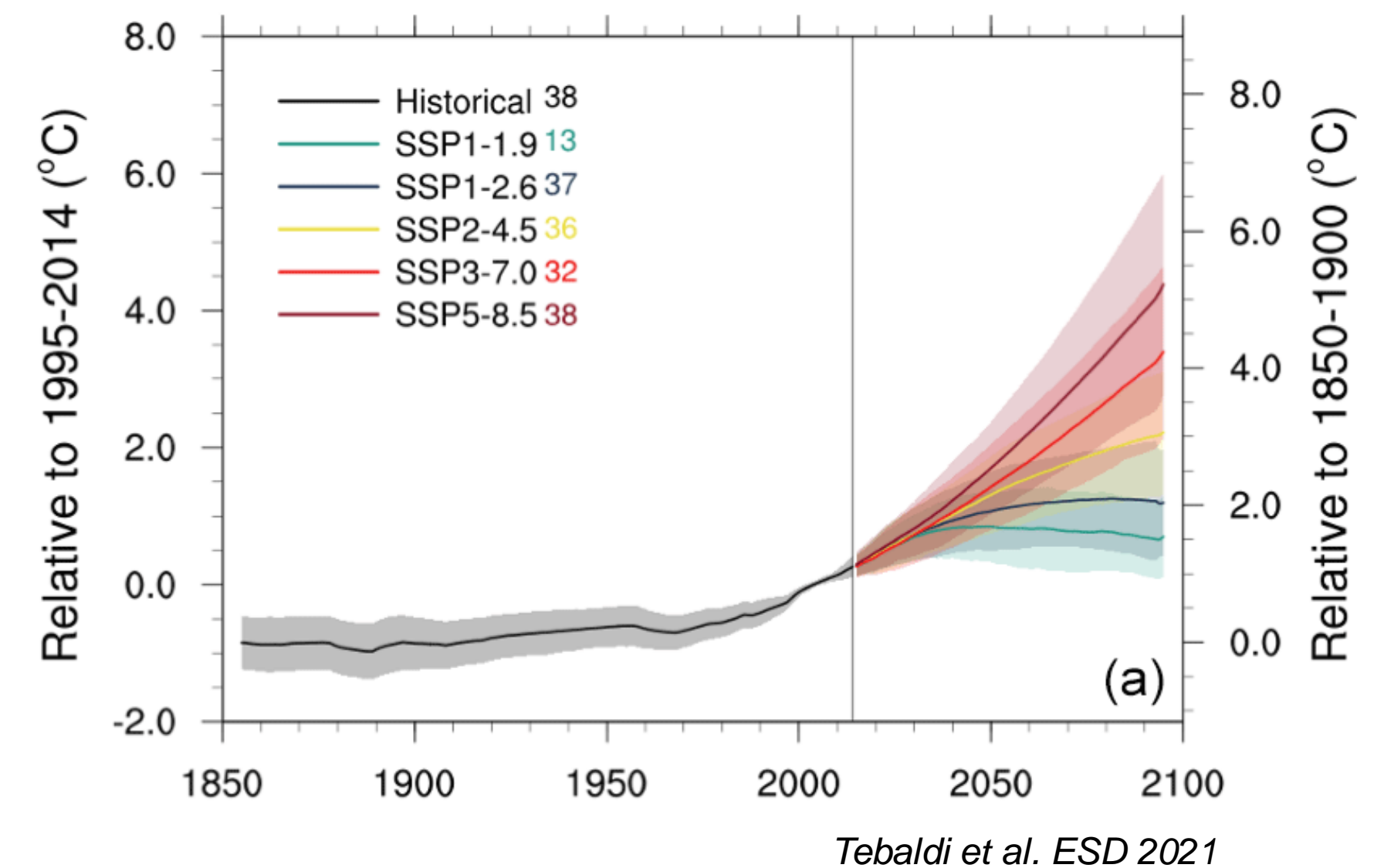


Arbeidsgruppe 1 vurderer de framskrivingene som finnes i faglitteraturen, uten hensyn til om de er «sannsynlige» eller ikke. Dette inkluderer et utvalg av SSP-scenariene, som også brukes i de andre arbeidsgruppene.

Scenarier i IPCC AR6:



AR6 (NB: Ikke fra rapporten!)



Arbeidsgruppe 1 vurderer de framskrivingene som finnes i faglitteraturen, uten hensyn til om de er «sannsynlige» eller ikke. Dette inkluderer et utvalg av SSP-scenariene, som også brukes i de andre arbeidsgruppene.